

# MICROMEDIA

## DORSET DIGITAL UPRIGHT

---

### ARTWORK SPECS

**Size:** 384px X 720px Portrait

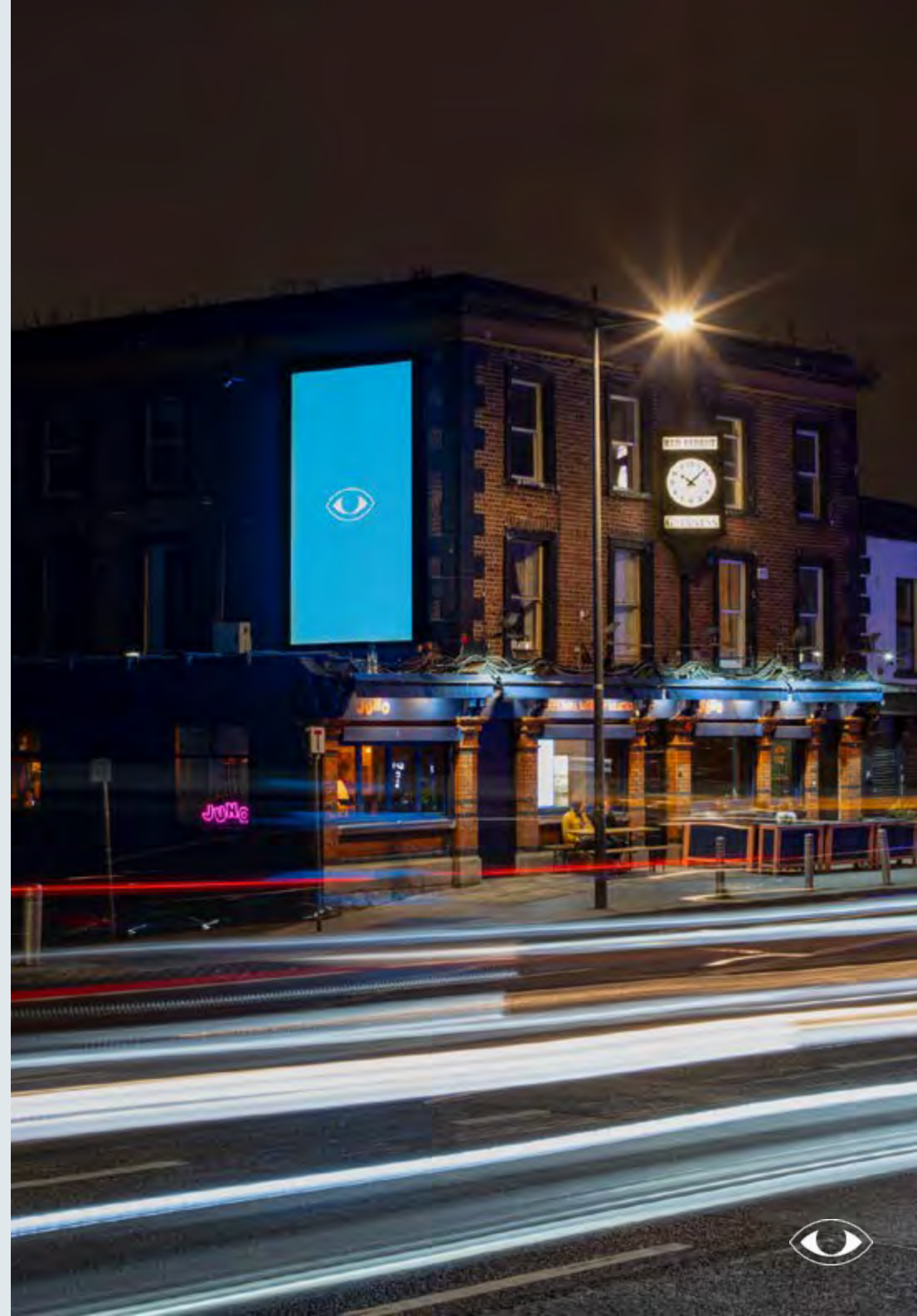
**Media:** JPEG Static Only

**DPI:**150

[Click To See Video](#)

---

Great depth is delivered with even Greater Light



# MICROMEDIA DONNYBROOK DIGITAL

---

## ARTWORK SPECS

**Size:** 648px X 432px Landscape

**Media:** JPEG Static Only

**DPI:**150

[Click To See Video](#)

---

Great depth is delivered with even Greater Light





# MICROMEDIA

## SOUTH LOTTS DIGITAL

---

### ARTWORK SPECS

**Size:** 936px X 504px Landscape

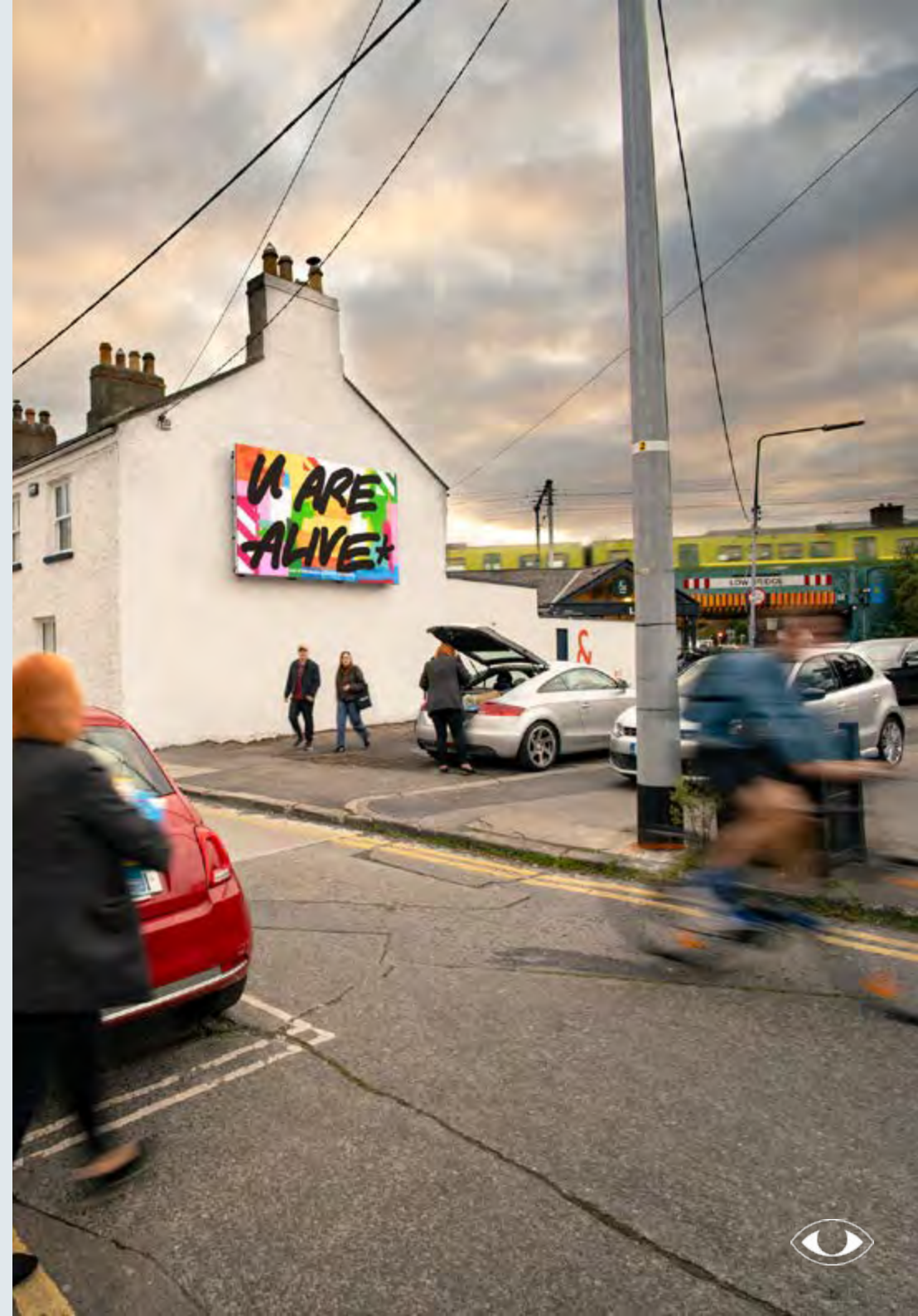
**Media:** JPEG Static Only

**DPI:**150

[Click To See Video](#)

---

Great depth is delivered with even Greater Light



# MICROMEDIA

## KILLEEN ROAD DIGITAL 48

---

### ARTWORK SPECS

**Size:** 864px X 432px Landscape

**Media:** JPEG Static Only

**DPI:**150

[Click To See Video](#)

---

Great depth is delivered with even Greater Light





# MICROMEDIA

## WEXFORD ST. DIGI UPRIGHT

---

### ARTWORK SPECS

**Size:** 288px X 504px Portrait

**Media:** JPEG Static Only

**DPI:** 96dpi

[Click To See Video](#)

---

Great depth is delivered with even Greater Light



# MICROMEDIA CORK DIGI UPRIGHT

---

## ARTWORK SPECS

**Size:** 1920px X 1080px Portrait

**Media:** JPEG or MP4

**Duration:** 10 seconds

**DPI:** 96dpi





# MICROMEDIA DOCKLANDS DIGITAL

---

## ARTWORK SPECS

**Size:** 1440px X 820px Landscape

**Media:** JPEG or MP4

**Duration:** 10 seconds

**DPI:** 150dpi

[Click To See Video](#)

---

Great depth is delivered with even Greater Light





# MICROMEDIA

## CLONLIFFE HOUSE DIGI UPRIGHT

---

### ARTWORK SPECS

**Size:** 256px X 512px

**Media:** JPEG

**Duration:** 10 seconds

**DPI:** 150dpi

[Click To See Video](#)

---

Great depth is delivered with even Greater Light



# MICROMEDIA SANDWICH SOLAR BILLBOARD

---

## ARTWORK SPECS

### Print Keyline Size:

3050mm x 3050mm

### Safe Copy Area:

2950mm X 2950mm

### File Format: High Res PDF

(Can be scaled to 10%)

### Text Format: Vectors for scaling

[Click To See Video](#)

---

Great depth is delivered with even Greater Light





# MICROMEDIA

## CROSSGUNS 3 X 12 SHEETS

---

### ARTWORK SPECS

#### Print Keyline Size:

3050mm X 1500mm

#### Safe Copy Area:

2950mm x 1400mm

#### File Format: High Res PDF

(Can be scaled to 10%)

#### Text Format: Vectors for scaling

[Click To See Video](#)

---

Great depth is delivered with even Greater Light



# MICROMEDIA NETWORKS

---

## ARTWORK SPECS

**URBAN / LIFESTYLE / CAMPUS**

**Size:** 1080px X 1920px Portrait

**Media:** JPEG or MP4

**Duration:** 10 seconds

**FPS:** 25

[Click To See Video](#)

---

Great depth is delivered with even Greater Light





# MICROMEDIA

## OFF-TRADE SLIM NETWORK

---

### ARTWORK SPECS

**Size:** 540px X 1920px Portrait

**Media:** JPEG or MP4

**Duration:** 10 Seconds

**FPS:** 25

---

Great depth is delivered with even Greater Light



**MICROMEDIA.**  
Look To The Light

Please email all artwork to:  
**orders@micromedia.ie**

4 Leinster St South, Dublin 2, D02XT95  
T. 087 229 6541 W. micromedia.ie